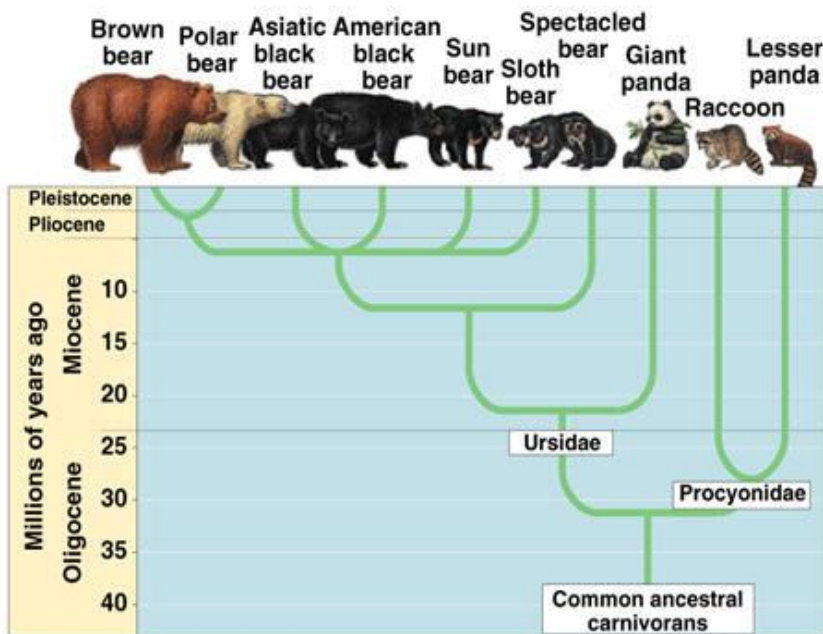


Our polar bear

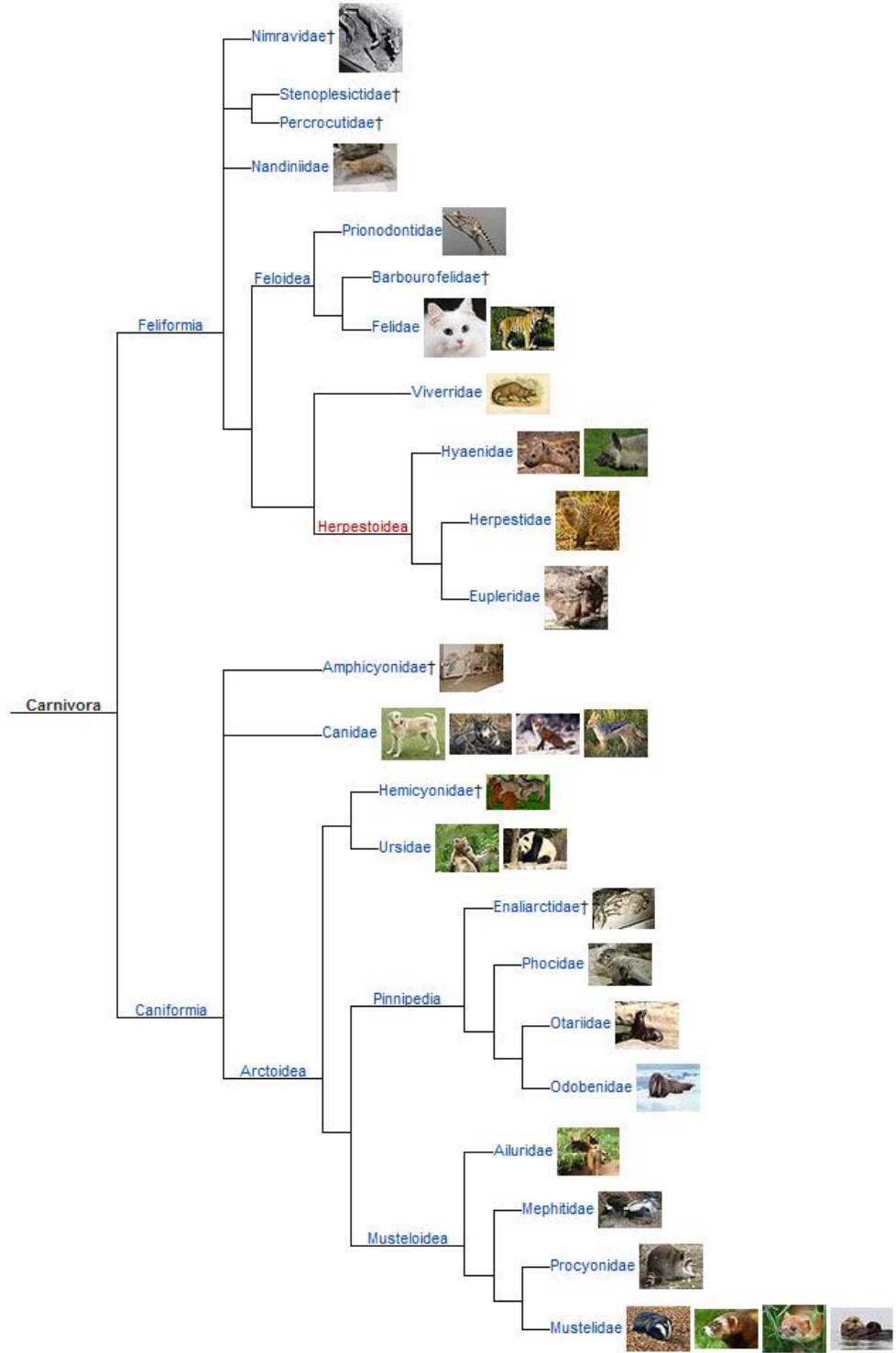


1.. Short Video of Thane Maynard (or Glenn) standing by this bear and describing where from, how acquired, how big etc. like Antique Roadshow , mention the info below

2. Evolution of bears



Phylogenetic tree [\[edit\]](#)



[See also](#) [\[edit\]](#)

3. Breaking news on Bears (and polar bears)



[Polar bears unlikely to thrive on land-based foods -- ScienceDaily](#)

Apr 1, 2015 ... Polar **bears**, increasingly forced on shore due to sea ice loss, may be eating terrestrial foods including berries, birds and eggs, but any ...

www.sciencedaily.com/releases/2015/04/150401133025.htm

LabeledFeatured ...



[Genetic maps help conservation managers maintain healthy bears ...](#)

May 21, 2015 ... A comprehensive genetic study of American black **bears** throughout North America has been completed by scientists. They discovered that ...

www.sciencedaily.com/releases/2015/05/150521133742.htm

LabeledFeatured ...



[Polar bears threatened: Experience limited energy savings in summer](#)

Jul 16, 2015 ... Some earlier research suggested that polar **bears** could, at least partially, compensate for longer summer food deprivation by entering a state of ...

www.sciencedaily.com/releases/2015/07/150716160322.htm

LabeledFeatured ...

[Contaminants also a threat to polar bears -- ScienceDaily](#)

Apr 7, 2015 ... Climate change is undoubtedly the main threat to polar **bears**. They also suffer from nutritional stress, reduction of polar ice, human contact and ...

www.sciencedaily.com/releases/2015/04/150407085025.htm

LabeledFeatured ...



[Greenhouse gas emissions remain primary threat to polar bears ...](#)

Jul 3, 2015 ... Substantial sea ice loss and expected declines in the availability of marine prey that polar **bears** eat are the most important specific reasons for ...

www.sciencedaily.com/releases/2015/07/150703085252.htm

LabeledFeatured ...

[Polar bears aren't the only victims of climate change -- ScienceDaily](#)

Jun 15, 2015 ... "When we talk about climate change, we can't just be talking about money and jobs and polar **bears**," he said. "Why do we focus on polar **bears** ...

www.sciencedaily.com/releases/2015/06/150615132938.htm

LabeledFeatured ...

[Snack attack: Bears munch on ants and help plants grow ...](#)

Jan 22, 2015 ... Tiny ants may seem like an odd food source for black **bears**, but the protein-packed bugs are a major part of some **bears'** diets and a crucial ...

www.sciencedaily.com/releases/2015/01/150122102639.htm

LabeledFeatured ...



[New fossils shed light on the origins of lions, tigers, and bears ...](#)

Jan 6, 2014 ... A new study discusses the origins of cats and dogs, as well as other carnivorous mammals like **bears**, seals, and weasels (taxonomically called ...

www.sciencedaily.com/releases/2014/01/140106160029.htm

LabeledFeatured ...



[Arctic conditions may become critical for polar bears by end of 21st ...](#)

Nov 26, 2014 ... Shifts in the timing and duration of ice cover, especially the possible lengthening of ice-free periods, may impact polar **bears** under projected ...

www.sciencedaily.com/releases/2014/11/141126144235.htm

LabeledFeatured ...



[Evolutionary history of bears: It's complicated -- ScienceDaily](#)

Jun 11, 2014 ... A prime example for this is polar **bears** and black **bears**. Nevertheless, the speciation of some individual genes has not finished yet which ...
www.sciencedaily.com/releases/2014/06/140611093447.htm
LabeledFeatured ...



[Change of heart keeps bears healthy while hibernating](#)

...
Feb 8, 2011 ... "**Bears** aren't a perfect model for humans, but the way in which a bear's heart can change could be helpful in understanding human disease," ...
www.sciencedaily.com/releases/2011/02/110207142625.htm
LabeledFeatured ...



[Polar bears evolutionarily five times older and genetically more ...](#)

Apr 20, 2012 ... Polar **bears** evolved as early as some 600000 years ago, according to a new study. Scientists show the largest arctic carnivore to be five times ...
www.sciencedaily.com/releases/2012/04/120420105332.htm
LabeledFeatured ...



[Polar bears unlikely to survive in warmer world, biologists say ...](#)

Nov 24, 2010 ... Polar **bears** are not likely to survive in a warmer world, biologists report. As polar **bears** lose habitat due to global warming, these biologists say, ...
www.sciencedaily.com/releases/2010/11/101124085607.htm
LabeledFeatured ...

4. Bears in Cincinnati

Black bears in nearby counties.
Brief article on ice age bears.

5. Looping video of polar bear

The screenshot shows a Firefox browser window with the address bar displaying `www.polarbearsinternational.org/media/videos/pol` and a search for "polar bear video". The browser's tab bar shows several open tabs, including "taxidermy polar bear - Google...", "carnivora taxonomy tree - Go...", "Polar Bears Crossing Thin Ice [...]", "undo in word - Google Search", and "ScienceDaily: Your source for ...".

The website, Polar Bears International, features a navigation menu with links for "OUR WORK", "OUR FRIENDS", "ABOUT POLAR BEARS", "SCIENCE", "FOR TEACHERS", and "FOR STUDENTS". There is also a search bar and buttons for "DONATE", "ADOPT", and "GIFT CENTER".

The main content area displays a video titled "Polar Bears Crossing Thin Ice". The video player shows a polar bear walking across a thin layer of ice. The video has a play button in the center and a progress bar at the bottom indicating it is at 00:05 of a 02:14 duration. The YouTube logo is visible in the bottom right corner of the video player.

Below the video player, there is a "Media Details" section with the text "Date Added Jan 22, 2015". To the right, there is a "Share" button and the video title "Polar Bears Crossing Thin Ice" followed by the description: "How do polar bears cross thin ice? Their big paws help distribute their weight."

The Windows taskbar at the bottom of the screen shows various application icons and the system clock displaying "2:14 AM 7/29/2015".